

# Digital Referral Pathway App (eRPW)

A field-driven digital solutions for GBV service providers



Access to GBV services is life-saving

Survivors need timely, specialized, multi-sectorial support. Service providers and other community members should be able to know easily where to direct them.

## Information on services is lacking

Referral pathways are often outdated and not widely disseminated. Survivors do not always receive the assistance they need.




## How to enhance accountability to women and girls survivors?

GBV and Child Protection service providers told us what they needed to enhance coordination and accountability to women and girls survivors



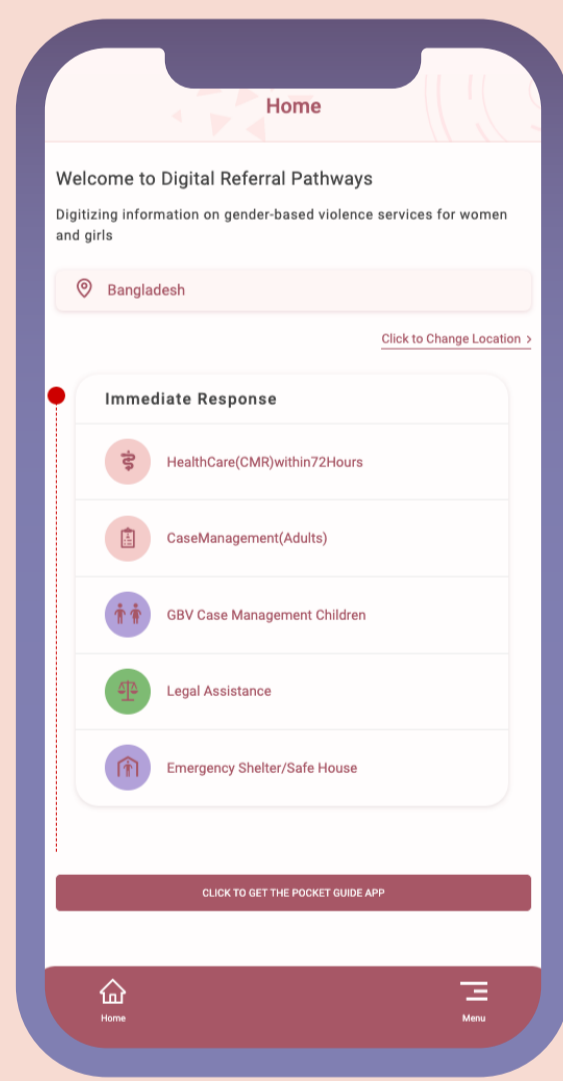
## The eRPW App


A simple application that enables digital updating of the referral pathways: localized services available in a few clicks, online and offline!

  
Can work **ONLINE** and **OFFLINE**

  
**MULTILINGUAL**  
Available in English, Arabic, Bengali, Ndebele & Shona

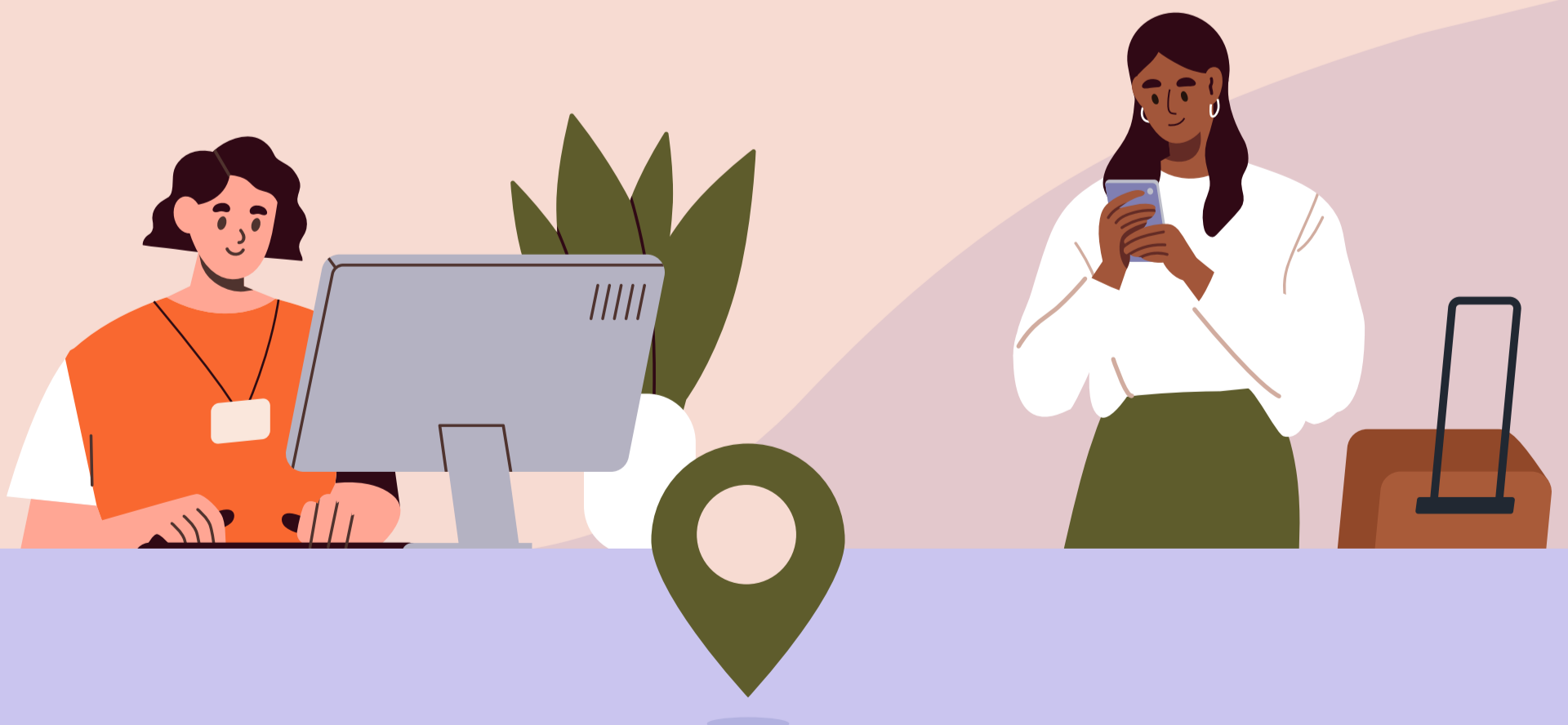
  
**SERVICE RATING**  
Mechanism to provide feedback on the services provided



  
**ROLE BASED ACCESS**  
Users can access features based on their roles

  
**NOTIFICATIONS**  
Reminders and alerts

  
**APPROVAL MECHANISM**  
Vetting feature to review & approve changes made by Service Providers



## Where are we now?

4 deployment contexts:

Sierra Leone, Bangladesh, Turkey Cross-border, Zimbabwe